

MONTHLY MEMBERSHIP PROGRESS REPORT

LOCATION WASHINGTON

District 19 B

Results as of: 5/31/2021

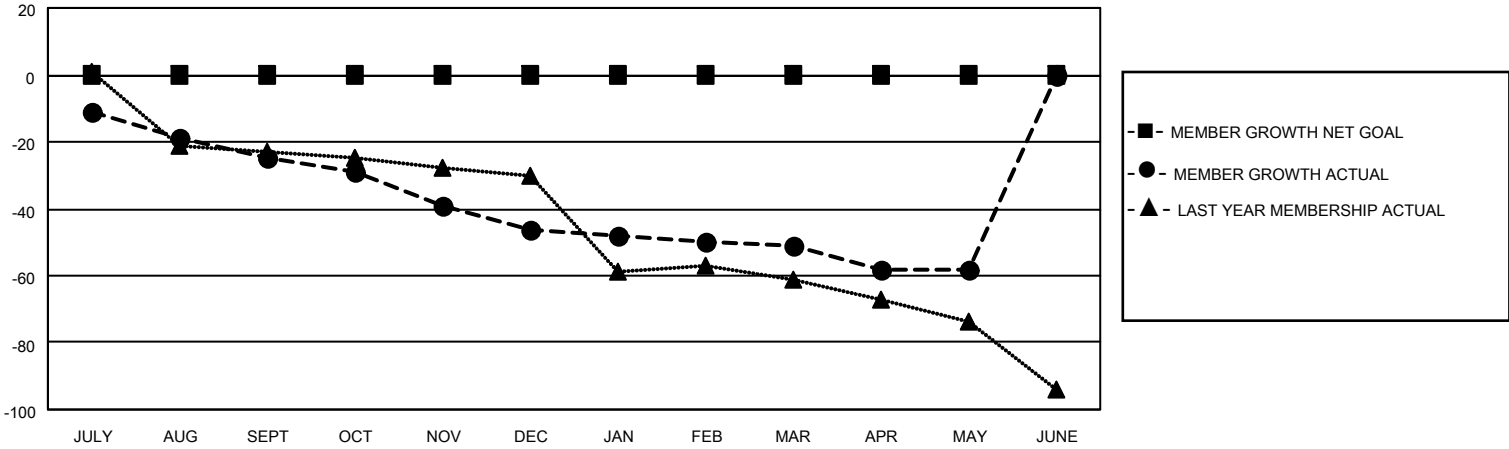
Clubs			
RESULTS FOR 2020-2021			
QUARTER	NEW CLUB GOAL	NEW CLUBS	DROPPED CLUBS
JULY/AUG/SEPT	0	0	1
OCT/NOV/DEC	0	0	0
JAN/FEB/MAR	0	0	0
APR/MAY/JUNE	0	0	0

Members			
RESULTS FOR 2020-2021			
QUARTER	MEMBER GROWTH NET GOAL	MEMBER GROWTH ACTUAL	DROPPED MEMBERS ACTUAL (including transfers)
JULY/AUG/SEPT	0	14	32
OCT/NOV/DEC	0	11	30
JAN/FEB/MAR	0	10	13
APR/MAY/JUNE	0	2	9

GOALS AND ACTUAL NEW CLUBS CUMULATIVE



GOALS AND ACTUAL MEMBERS CUMULATIVE



DROPPED CLUBS: 1	13 CLUBS OF 31 ADDED 1 OR MORE NEW MEMBERS	<u>GENDER DISTRIBUTION</u> MALE 370 (58.54%) FEMALE 262 (41.46%)
<u>DROPPED MEMBERS</u> DECEASED 12 CLUB CANCELLED 5 OTHER 67 <hr/> TOTAL 84	CLICK HERE FOR CUMULATIVE MEMBERSHIP DATA	TOTAL FAMILY UNIT MEMBERS 134 FAMILY MEMBERS PAYING HALF DUES 69